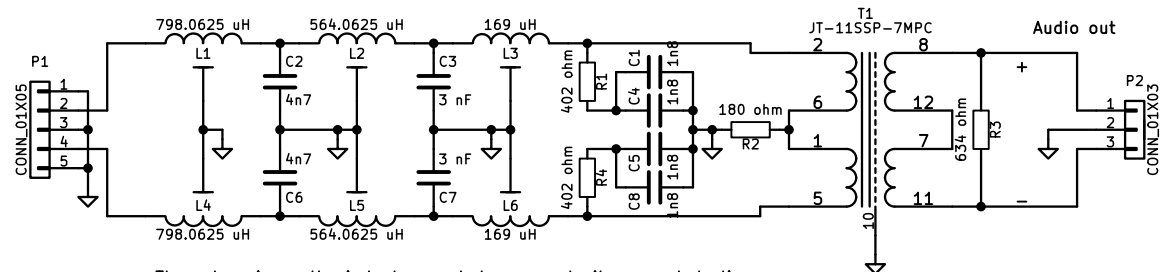


Filter capacitors: $\pm 1\%$, 160 V, polystyrene

Filter inductors:
56.5, 47.5 and 26 turns, respectively,
of 0.6 mm "enamelled" copper wire
on a 250 nH/turn², N48, P26x16 potcore
type Siemens/Epcos/TDK B65671-T250-G48
with no adjusting screw, base plate with clip
B65675-B5X0 and coil former type
B65672-B-T1



The extra pin on the inductor symbol represents its grounded clip.

